



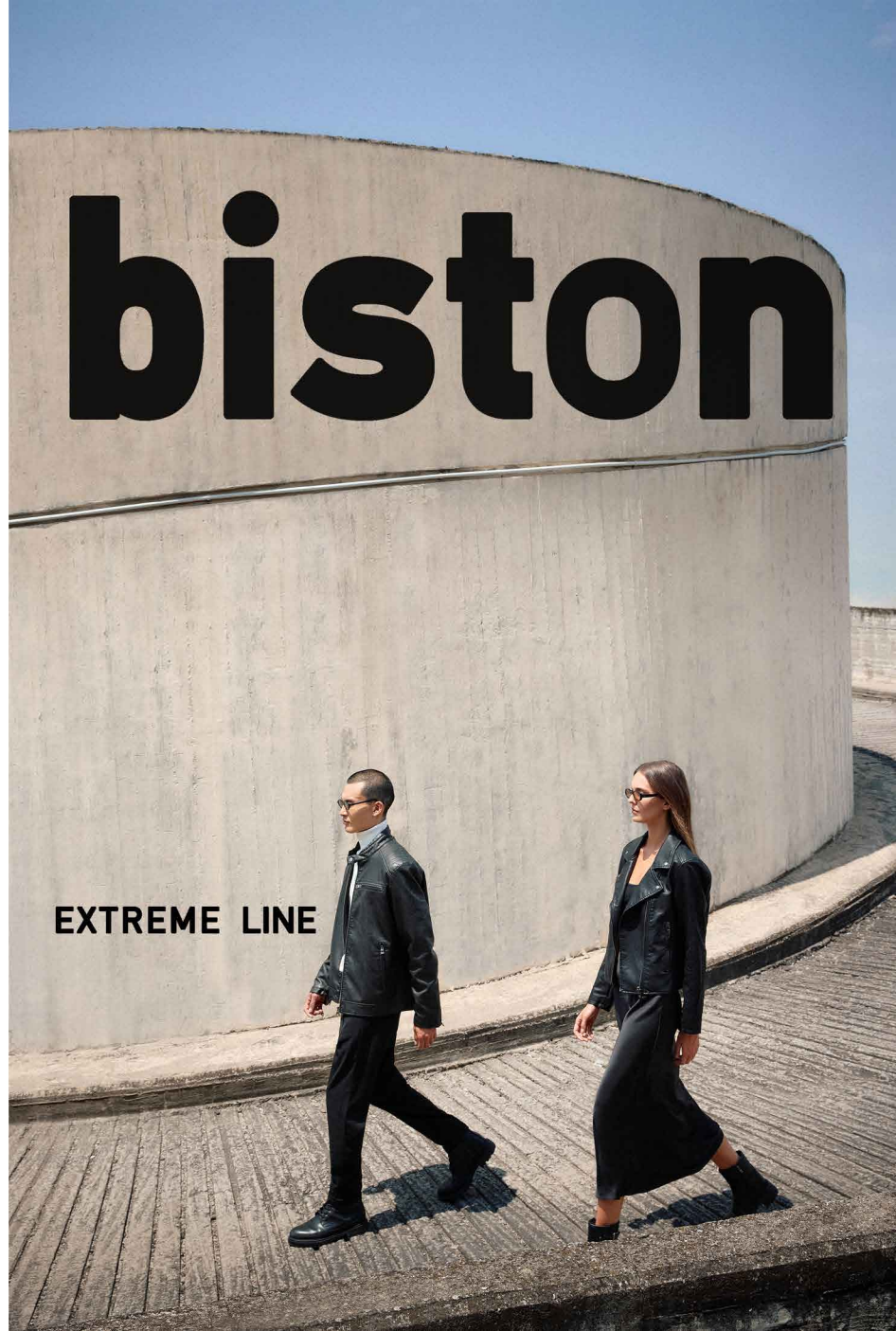
biston

W
I
N
T
E
R

C
O
L
L
E
C
T
I
O
N

2
0
2
5
|
2
6

EXTREME LINE



Philosophy

Prime Fashion S.A. was founded in Thessaloniki and includes the trademarks of Biston, Splendid, Smart. Biston was established in 1998 a brand that combined creativity, innovation and fashion in one single casual approach. Over the years, they have managed to develop their own design concept and new ideas came to life based on the market needs.

With an efficient distribution channel across Greece and Europe, with its products at competitive prices and on-time deliveries, it increased sales by 50% in the first four years. In 2007, it entered a new life and work style by launching its own privately-owned facilities and show rooms, as well as its even larger warehouses equipped with the latest logistics storage facilities, aiming to a most direct and fast service for its customers.

In 2012, Prime Fashion SA entered dynamically in the field of e-commerce by creating a modern online store www.biston.gr and then in 2016 the online store was redesigned to match even better the brand's image and to be even more functional and user-friendly for its customers. Investing in modern social media, we aim at breaking down the barrier between traditional retail and e-commerce, approaching more and more clients everywhere in Greece and throughout the world.

Prime Fashion S.A. (splendid, biston, smart) characterised mainly by its wide range in men's and women's jackets, launches a collection each season for men and women who want to feel special every moment. The new collection brings up each person's personal taste - proving that style can still be our ally in everyday demanding life.

Our new proposals for jackets, vests, synthetic leather, faux furs, sweatshirts, accessories appeal to men and women that love modern lifestyle and feel special. With a wide range of casual, athletic, boutique clothing and accessories, every person can find what best reflects her/his personality in outfits for the office, to go for a walk, go out to a restaurant, do sports.

The company takes special care so that the fabrics and auxiliary materials used are environmentally-friendly, accompanied by quality certificates, free from any substance that could be harmful to the consumer.

The company's top priorities include further strengthening of the domestic retail network, either through equity or by developing new partnerships where appropriate. Particular emphasis is placed on further developing its sales abroad. The company already seeks to further expand both in markets where it is already active and to also enter new markets that are of great interest for the company's products. The company's clothes are currently available at more than 200 points of sale all over Greece, Cyprus, the Balkans, as well as at its online store

www.primefashion.gr

HEADQUARTERS:

2nd. P. Simmachikis Odou Oraiakastrou-Diavaton,
P.C. 57013 - P.OB. 1051
T: 2310 411.715 & 414.102,
F: 2310 415.347,
www.primefashion.gr
email: info@biston.gr

N. Greece Representative:

Alexandros Georgiadis, M: 6977 35 40 40

Athens- Islands Representative:

Andreas Lampropoulos,
M: 6978 99 11 71, T: 210 57 44 312
59 Amfiaraou Str, Kolonos, Athens
P.C 10442

S. Greece Representative:

Petros Giannis M: 6936 78 77 78

Crete Island Representative:

Pitarokilis Lefteris
M: 6979 98 30 33, 6979 98 30 34
T: 2810 280 715, 2810 281 253
F: 2810 243 531
Danilou Sintichaki 14
and Olof Palme 147
P.C. 71409

Join us on  Biston - Splendid
 Biston_Splendid





SPY BOY

Create an effortlessly cool look with a black leather jacket.



MEN'S PU LEATHER JACKET

CODE : 49-201-001

COMPOSITION : 100% PU

SIZES : S:2 M:4 L:2 XL:2

COLOR :



BLACK CAMEL



MEN'S CHINO PANTS

CODE : 54-241-003 SIZES: 28:2 30:4 32:434:2 36:2 38:2

COMPOSITION : 63% PES 34% VIS 3% EL

COLOR :



BLACK, LT GREY

THE AURA FARMING LOOK

Simple is always gorgeous when it comes to a white shirt with a turtleneck.



MEN'S PU LEATHER JACKET MEN'S KNITWEAR

CODE : 54-201-007

COMPOSITION : 55% PU 45% PES

SIZES : M:2 L:4 XL:2 XXL:2

C : XL:4 XXL:4 XXXL:4

COLOR :



BLACK

CODE : 54-206-013

COMPOSITION : 82% CO 18% NY

SIZES : M:2 L:4 XL:4 XXL:2 XXXL:2

COLOR :



BLACK WHITE GREY

This black hooded demi jacket is all you need to be warm during winter times.



MEN'S DEMI JACKET

CODE : 54-201-084

SIZES : M:2 L:4 XL:2 XXL:2

COLOR :



COMPOSITION : 100% PES

C : XL:4 XXL:4 XXXL:4





Bring warmth to your winter looks with an orange hooded jacket.





MEN'S JACKET

CODE : 54-201-034

SIZES : S:2 M:4 L:4 XL:4 XXL:2

COLOR :

COMPOSITION : 100% PES

 
BLACK ORANGE



Create the perfect layering with a grey shirt paired with a black jacket.



MEN'S JACKET

CODE : 54-201-034

SIZES : S:2 M:4 L:4 XL:4 XXL:2

COMPOSITION : 100% PES

COLOR :



BLACK ORANGE



MEN'S CARGO PANTS

CODE : 49-241-011 SIZES : 28:2 30:4 32:4 34:4 36:2 38:2

COMPOSITION : 98% CO 2% EL

COLOR :



BLACK KHAKI DK BEIGE

THE BADDIE LOOK

The perfect puffer jacket exists and it's here.



MEN'S JACKET

CODE : 54-201-048 SIZES : M:2 L:4 XL:4 XXL:2

COMPOSITION : 55% PU 45% PES

COLOR :



BLACK BROWN



BROWN IS THE NEW BLACK

Create a unique look with a brown jacket with light brown details paired with a light grey jacket.



MEN'S JACKET

CODE: 54-201-048

COMPOSITION: 55% PU 45% PES

SIZES: M:2 L:4 XL:4 XXL:2

COLOR:



BLACK BROWN

The perfect casual winter look requires a brown hoodie with a print paired with a black jacket.



MEN'S SWEAT HOODIE

CODE : 52-206-011

COMPOSITION : 60% CO 40% PES

SIZES : M:2 L:4 XL:4 XXL:2

COLOR :



BEIGE



MEN'S SHORT JACKET

CODE : 52-201-091

COMPOSITION : 100% PES

SIZES : M:2 L:4 XL:2 XXL:2

COLOR :



BLACK



CAMEL





This light green jacket is perfect for the chilly winter nights.



MEN'S SHORT JACKET

CODE : 54-201-068

COMPOSITION : 100% PES

SIZES : M:2 L:4 XL:2 XXL:2

COLOR :



BLACK KHAKI

THE ICONIC LOOK

Look as iconic as ever with this black jacket and a white button-up shirt.



MEN'S SHORT JACKET

CODE : 54-201-068 SIZES : M:2 L:4 XL:2 XXL:2

COMPOSITION : 100% PES

COLOR :



BLACK KHAKI





Every wardrobe needs a basic jacket. This brown jacket will be your favorite this season.



MEN'S JACKET WITH HOOD

CODE : 54-201-067 SIZES : M:2 L:4 XL:2 XXL:2

COMPOSITION : 100% PES C : XL:4 XXL:4 XXXL:4

COLOR :





THE BADASS LOOK

If cool was a look, then this would be it.

MEN'S PU LEATHER JACKET

CODE : 54-201-007

COMPOSITION : 55% PU 45% PES

SIZES : M:2 L:4 XL:2 XXL:2

C : XL:4 XXL:4 XXXL:4

COLOR :



BLACK

Create a royal look with this leather coat.



MEN'S T-SHIRT

CODE : 54-206-001

SIZES : S:2 M:2 L:4 XL:4 XXL:2

COLOR :



COMPOSITION : 100% CO



MEN'S DEMI COAT

CODE : 54-201-076

SIZES : S:2 M:4 L:4 XL:2

COLOR :



COMPOSITION : 100% PES

THE SPORTY LOOK

This black fleece jacket is perfect for your daily activities.



MEN'S JACKET WITH HOOD

CODE : 54-201-069 SIZES : S:2 M:4 L:2 XL:2

COMPOSITION : 100% CR

COLOR :



MEN'S CARGO PANTS

CODE : 54-241-005 SIZES : M:2 L:4 XL:4 XXL:2

COMPOSITION : 100% CO

COLOR :





THE LEISURE LOOK

This green hooded jacket paired with a blue coat and denim jeans is the ideal look for a cute walk in town.



MEN'S HOODED JACKET

CODE : 54-201-102

COMPOSITION : 100% CR

SIZES : M:2 L:4 XL:2 XXL:2

COLOR :



BLACK NAVY

MEN'S KNITTED SWEATER

CODE : 54-206-015

COMPOSITION : 82% CO 18% NY

SIZES : M:2 L:4 XL:4 XXL:2 XXXL:2

COLOR :



BLACK WINE RED GREY PETROL NAVY DK GREEN BEIGE

Layer is key during winter.

This two-piece jacket paired with brown pants is a stunning combination.



MEN'S 2 PIECE JACKET

CODE: 54-201-029

SIZES: M:2 L:4 XL:2 XXL:2

COLOR:



BLACK BROWN

COMPOSITION: 60% CR 40% PES C: XL:4 XXL:4 XXXL:4





You can never go wrong with a black shirt and a black puffer jacket.



MEN'S PUFFER JACKET

CODE : 54-201-003

COMPOSITION : 100% PES

SIZES : M:2 L:4 XL:2 XXL:2

COLOR :



BLACK PETROL ICE

MEN'S HALF ZIP

CODE : 54-206-009

COMPOSITION : 82% CO 18% NY

SIZES : M:2 L:4 XL:4 XXL:2 XXXL:2

COLOR :



BLACK NAVY DK GREEN



MEN'S ULTRA LIGHT JACKET

CODE : 54-201-103

COMPOSITION : 100% PES

SIZES : M:2 L:4 XL:2 XXL:2

COLOR :



BLACK

Feel as comfortable as ever with this black light jacket.



Elevate your everyday look with a grey T-shirt and a grey cardigan.



MEN'S T-SHIRT

CODE : 54-206-001

COMPOSITION : 100% CO

SIZES : S:2 M:2 L:4 XL:4 XXL:2

COLOR :



BLACK WHITE DK GREY LT GREY PAPRIKA BEIGE

MEN'S KNITWEAR CARDIGAN

CODE : 54-206-010

COMPOSITION : 82% CO 18% NY

SIZES : M:2 L:4 XL:4 XXL:2 XXXL:2

COLOR :



BLACK DK GREY NAVY

MEN'S CHINO PANTS

CODE : 54-241-003 SIZES : 28:2 30:4 32:4 34:2 36:2 38:2

COLOR :



BLACK LT GREY

COMPOSITION : 63% PES 34% VIS 3% EL



MEN'S ULTRA LIGHT JACKET

CODE : 54-201-103 SIZES : M:2 L:4 XL:2 XXL:2

COLOR :



BLACK

COMPOSITION : 100% PES



MEN'S CHINO PANTS

CODE : 54-241-007 SIZES : 30:2 32:4 34:4 36:4 38:2 40:2

COMPOSITION : 97% CO 3% EL

COLOR :



THE GENTLEMAN LOOK

Create a classy outfit with a black long puffer coat paired with a dark blue jacket and a white shirt.



MEN'S HOODED JACKET

CODE : 54-201-100 SIZES : M:2 L:4 XL:2 XXL:2

COMPOSITION : 100% PES

COLOR :



A dark blue outfit from head to toe will never go out of style.



MEN'S HALF ZIP

CODE : 54-206-009

COMPOSITION : 82% CO 18% NY

SIZES : M:2 L:4 XL:4 XXL:2 XXXL:2

COLOR :



BLACK NAVY DK GREEN



MEN'S HOODED JACKET

CODE : 52-201-107

COMPOSITION : 100% PES

SIZES : M:2 L:4 XL:2 XXL:2

C : XL:4 XXL:4 XXXL:4

COLOR :



BROWN NAVY



Look naturally cool with this blue shirt paired with denim jeans.



MEN'S DOUBLE-FACE JACKET MEN'S KNITTED SWEATER

CODE : 54-201-020

COMPOSITION : 90% CR 10% PES

SIZES : M:2 L:4 XL:2 XXL:2

COLOR :



DK GREEN - NAVY BLACK-FANGO

CODE : 54-206-015

COMPOSITION : 82% CO 18% NY

SIZES : M:2 L:4 XL:4 XXL:2 XXXL:2

COLOR :



BLACK GREY WINE RED NAVY PETROL DK GREEN BEIGE

This grey hooded jacket is all you need to upgrade your winter looks.



MEN'S JACKET WITH HOOD MEN'S KNITTED SWEATER

CODE : 54-201-108

COMPOSITION : 100%CR

SIZES : M:2 L:4 XL:2 XXL:2

COLOR :



BLACK DK BEIGE DK GREEN

CODE : 54-206-015

COMPOSITION : 82% CO 18% NY

SIZES : M:2 L:4 XL:4 XXL:2 XXXL:2

COLOR :



BLACK WINE RED NAVY PETROL DK GREEN GREY BEIGE



MEN'S CHINO PANTS

CODE : 48-241-001 SIZES : 28:2 30:4 32:4 34:4 36:2 38:2

COMPOSITION : 98% CO 2% EL

COLOR :



BLACK CAMEL BEIGE

THE TOO COOL FOR SCHOOL LOOK

White is the perfect winter color, and especially our white turtle neck shirt.



MEN'S KNITWEAR

CODE: 54-206-014

COMPOSITION : 82% CO 18% NY

SIZES: M:2 L:4 XL:4 XXL:2 XXXL:2

COLOR :



BLACK WHITE DK GREY DK GREEN WINE RED

MEN'S JACKET WITH HOOD

CODE: 54-201-108

COMPOSITION : 100% CR

SIZES: M:2 L:4 XL:2 XXL:2

COLOR :



BLACK DK GREEN DK BEIGE



Achieve the coziest look with this blue puffer jacket.



MEN'S PUFFER JACKET

CODE : 54-201-082 SIZES : M:2 L:4 XL:2 XXL:2

COMPOSITION : 100% PES

COLOR :



BLACK MINT BEIGE





THE MODERN PRINCE LOOK

Impress everyone with this bordo coat.



MEN'S JACKET

CODE : 54-201-053

COMPOSITION : 100% PES

SIZES : M:2 L:4 XL:4 XXL:2

COLOR :



BLACK BORDO

MEN'S KNITWEAR

CODE : 54-206-013

COMPOSITION : 82% CO 18% NY

SIZES : M:2 L:4 XL:4 XXL:2 XXXL:2

COLOR :



BLACK WHITE GREY



A total grey outfit will bring your inner New Yorker.



MEN'S COAT

CODE : 54-201-054

COMPOSITION : 100% PES

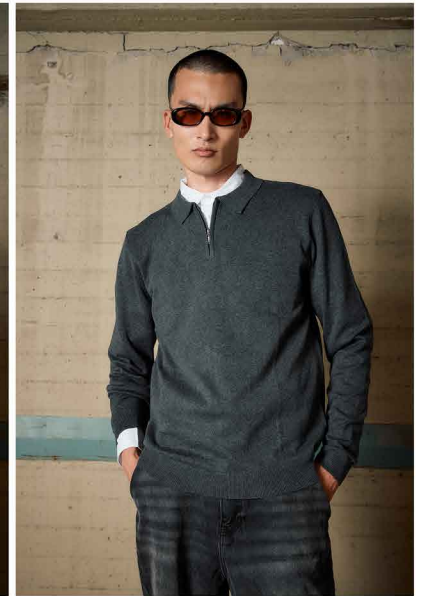
SIZES : M:2 L:4 XL:2 XXL:2

C : XL:4 XXL:4 XXXL:4

COLOR :



DK GREY NAVY



MEN'S HALF ZIP

CODE : 54-206-012

COMPOSITION : 82% CO 18% NY

SIZES : M:2 L:4 XL:4 XXL:2 XXXL:2

COLOR :



BLACK NAVY DK GREY

Look as slick as ever with this grey coat paired with a white shirt.



MEN'S DEMI COAT

CODE: 54-201-104 SIZES: M:2 L:4 XL:2 XXL:2

COMPOSITION: 80% PES 20% WO

COLOR:



BLACK DK GREY



Create the perfect winter layering with this blue coat paired with a puffer jacket and a beige cardigan.



MEN'S COAT

CODE : 54-201-054

COMPOSITION : 100% PES

SIZES : M:2 L:4 XL:2 XXL:2

C : XL:4 XXL:4 XXXL:4

COLOR :



DK GREY NAVY

Create a bold black look with a black leather jacket paired with black trousers.



MEN'S SHORT JACKET

CODE : 54-201-091

COMPOSITION : 100% PU

SIZES : M:2 L:4 XL:2 XXL:2

COLOR :



BLACK



MEN'S SLEEVE T-SHIRT

CODE : 54-206-002

COMPOSITION : 95% CO 5% EL

SIZES : M:2 L:4 XL:4 XXL:2

COLOR :



BLACK NAVY BORDO



MEN'S SHORT JACKET

CODE : 54-201-091

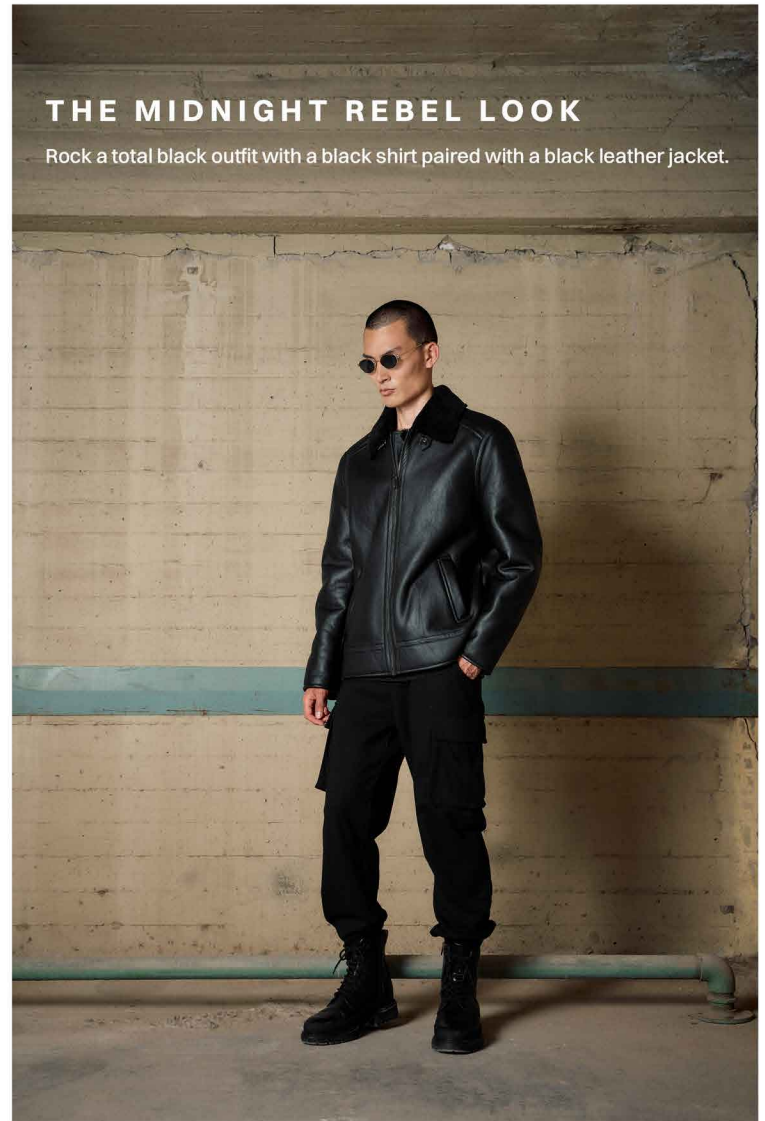
COMPOSITION : 100% PU

SIZES : M:2 L:4 XL:2 XXL:2

COLOR :



BLACK



MEN'S CARGO PANTS

CODE : 50-241-010

SIZES : 30:2 32:4 34:4 36:2 38:2

COMPOSITION : 78% PES 20% VIS 2% SPA

COLOR :



BLACK DK GREY

Create the perfect office look with a white shirt paired with a black jacket.



Achieve a stunning winter look with a light grey jacket with a hood paired with a dark blue shirt.

MEN'S HOODED JACKET

CODE : 54-201-101

SIZES : M:2 L:4 XL:2 XXL:2

COMPOSITION : 81% PA 19% EL

C : XL:4 XXL:4 XXXL:4

COLOR :



THE '90s REVIVAL LOOK

Look as fine as a 90s model with this black hooded jacket paired with a grey shirt and grey cargo pants.



MEN'S DEMI HOODED JACKET

CODE : 54-201-099

COMPOSITION : 96% PES 4% EL

SIZES : M:2 L:4 XL:2 XXL:2

C : XL:4 XXL:4 XXXL:4

COLOR :



BLACK



MEN'S CARGO PANTS

CODE : 50-241-010 SIZES : 30:2 32:4 34:4 36:2 38:2

COMPOSITION : 78% PES 20% VIS 2% SPA

COLOR :



BLACK DK GREY

THE TIMELESS LOOK

You can never go wrong with a black hooded jacket paired with a grey shirt and grey trousers.



MEN'S HOODED JACKET

CODE : 54-201-099 SIZES : M:2 L:4 XL:2 XXL:2

COMPOSITION : 96% PES 4% EL C : XL:4 XXL:4 XXXL:4

COLOR :



BLACK



Make a gorgeous look with a bordo shirt paired with a hooded jacket.



MEN'S SHORT JACKET

CODE : 54-201-051

COMPOSITION : 55% CR 45% PES

SIZES : M:2 L:4 XL:2 XXL:2

C : XL:4 XXL:4 XXXL:4

COLOR :



BLACK DK GREEN ANTHRACITE

MEN'S LONG SLEEVE T-SHIRT

CODE : 54-206-002

COMPOSITION : 95% CO 5% EL

SIZES : M:2 L:4 XL:4 XXL:2

COLOR :



BLACK NAVY BORDO



Look polished with a brown suede jacket paired with a black shirt.



MEN'S BOMBER PU SUEDE LIKE JACKET

CODE : 50-201-105

SIZES : M:2 L:4 XL:2 XXL:2

COLOR :

COMPOSITION : 100% PES

C : XL:4 XXL:4 XXXL:4





MEN'S CHINO PANTS

CODE : 46-241-014 SIZES : 28:2 30:4 32:4 34:2 36:2 38:2

COMPOSITION : 63% PES 34% VIS 3% EL

COLOR :



BLACK GREY

THE KINGSMAN LOOK

Create a dashing look with a total black outfit with a dark grey coat.



MEN'S LONG COAT

CODE : 54-201-063 SIZES : M:2 L:4 XL:2 XXL:2

COMPOSITION : 80% PES 20% WO C : XL:4 XXL:4 XXXL:4

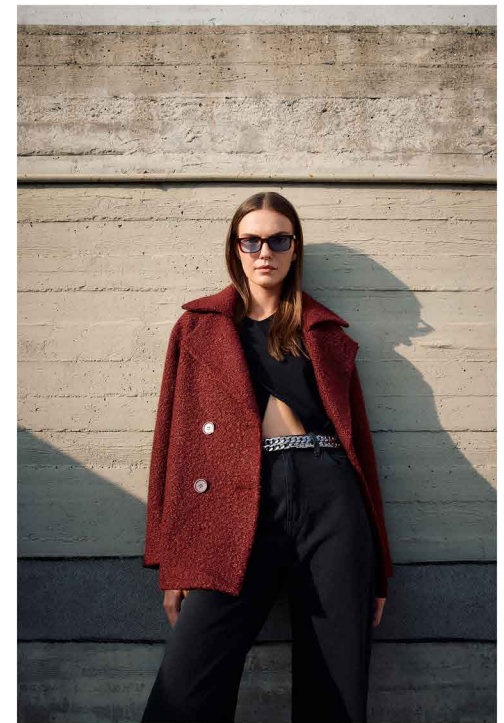
COLOR :



BLACK



All you need for an elegant look is a red coat.



LADIES' DEMI COAT

CODE : 54-101-049

COMPOSITION : 100% PES

SIZES : S:2 M:4 L:2 XL:2

COLOR :



BLACK WINE RED BEIGE



THE BALLERINA LOOK

Look as elegant as a ballerina with a beige coat paired with a shirt and brown trousers.



LADIES' DEMI COAT

CODE : 54-101-049 SIZES : S:2 M:4 L:2 XL:2

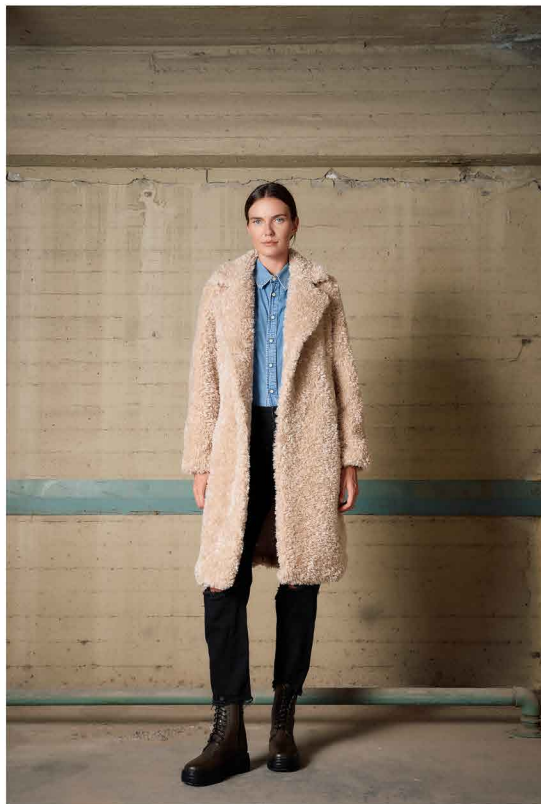
COMPOSITION : 100% PES

COLOR :



BLACK WINE RED BEIGE

Prepare for a fashionista winter with this boa fur coat.



LADIES' LONG BOA FUR COAT

CODE: 54-101-101 SIZES: S:2 M:4 L:2 XL:2

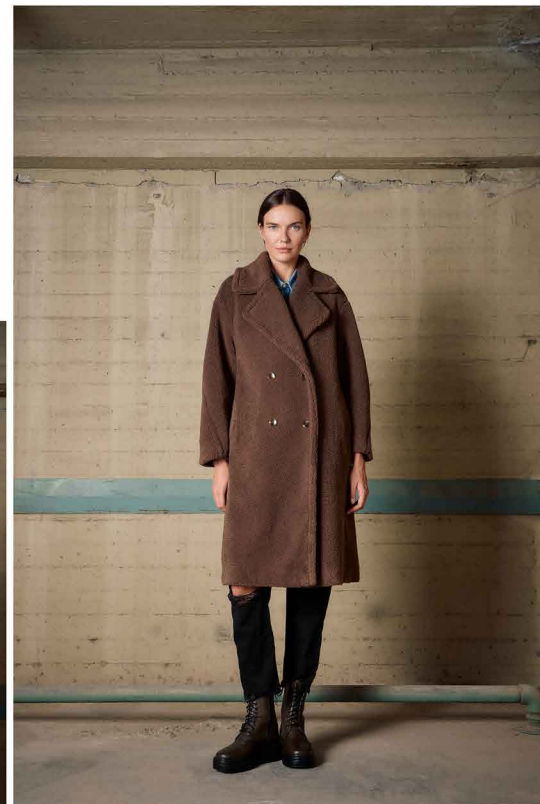
COMPOSITION: 100% PES

COLOR:



BLACK CAMEL BEIGE

Be stylish even in the coldest winter days with this brown boa fur coat.



LADIES' LONG BOA FUR COAT

CODE: 54-101-038 SIZES: S:2 M:4 L:2 XL:2

COMPOSITION: 100% PES

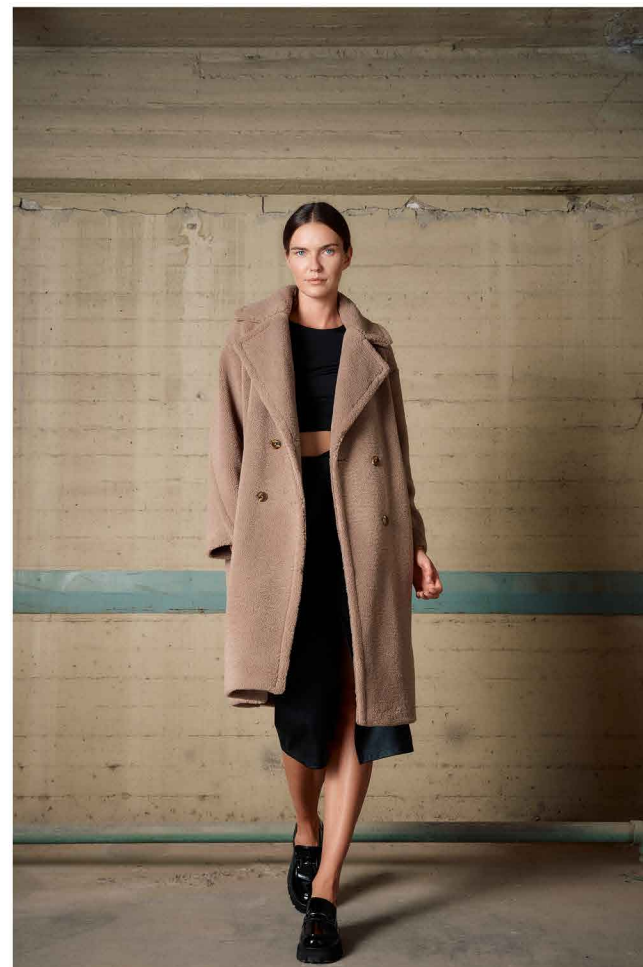
COLOR:



BLACK BEIGE COFFEE

THE WINTER QUEEN LOOK

Elevate your look while still feeling cozy with our brown boar fur coat.



LADIES' LONG BOA FUR COAT

CODE: 54-101-038 SIZES: S:2 M:4 L:2 XL:2

COMPOSITION: 100% PES

COLOR:





THE RETRO GLAM LOOK

This brown long fur coat will create a jaw-dropping look.



LADIES' LONG BOA FUR COAT

CODE : 54-101-056 SIZES : S:2 M:4 L:2 XL:2

COMPOSITION : 100% PES

COLOR :



BLACK LT BROWN

Dress to impress with this black long boa fur coat paired with a white shirt and black trousers with a retro print.



LADIES' LONG BOA FUR COAT

CODE : 54-101-056 SIZES : S:2 M:4 L:2 XL:2

COMPOSITION : 100% PES

COLOR :



BLACK LT BROWN





A beige trench coat is a must for an everyday winter look.



LADIES' LONG TRENCH COAT

CODE : 54-101-068

COMPOSITION : 100% PES

SIZES : S:2 M:4 L:2 XL:2

COLOR :



BLACK BEIGE MINT

THE LONDONER LOOK

This mint trench coat will bring the English vibe to your look.



LADIES' LONG TRENCH COAT

CODE: 54-101-068 SIZES: S:2 M:4 L:2 XL:2

COMPOSITION: 100% PES

COLOR :





THE LONDONER LOOK

This green trench coat will bring the English vibe to your look.



LADIES' LONG PUFFER JACKET

CODE : 54-101-098 SIZES : S:2 M:4 L:2 XL:2

COMPOSITION : 100% PES

COLOR :



BLACK GREEN



This mint jacket with a hood will bring an elegant touch to your everyday looks.



LADIES' DEMI JACKET WITH HOOD

CODE : 54-101-047

COMPOSITION : 100% PES

SIZES : S:2 M:4 L:2 XL:2

COLOR :



BLACK GREY MINT DK BEIGE

Feel cozy while running errands with a mint jacket with a hood.



LADIES' DEMI JACKET WITH HOOD

CODE: 54-101-047 SIZES: S:2 M:4 L:2 XL:2

COMPOSITION: 100% PES

COLOR:



THE QUIET LUXURY LOOK

Look as stunning as a princess with this long beige coat.



LADIES' LONG COAT

CODE : 54-101-067

COMPOSITION : 100% PES

SIZES : S:4 M:4 L:2

COLOR :



BLACK LT BEIGE

THE ROYALTY LOOK

Look like an 80's goddess with this light beige long coat with fur.



LADIES' LONG COAT

CODE: 54-101-071 SIZES: S:2 M:4 L:2 XL:2

COMPOSITION: 100% PES C: L:4 XL:4 XXL:4

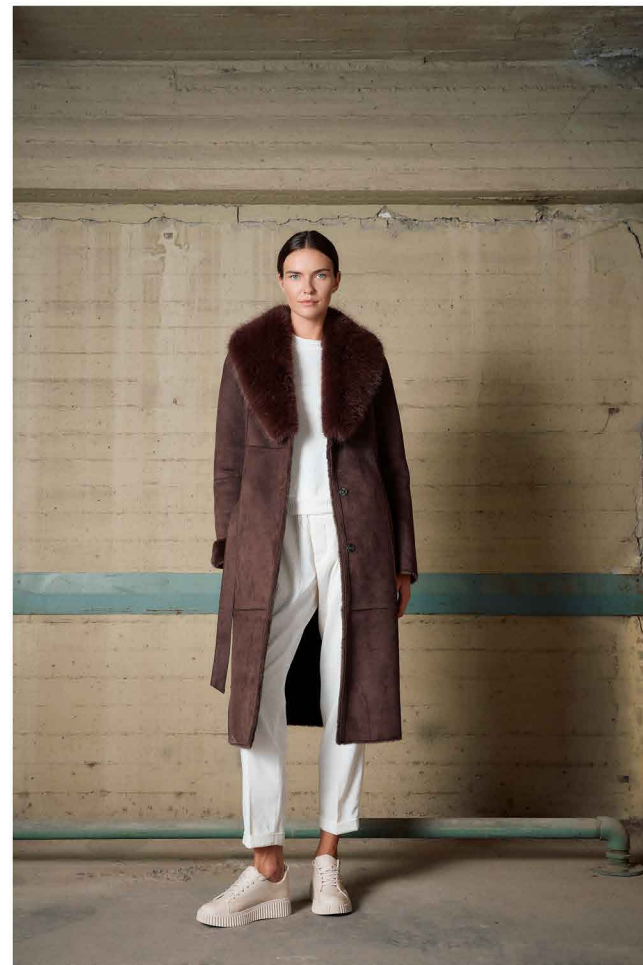
COLOR:



BLACK LT BEIGE BROWN

THE NEPO BABY LOOK

Impress everyone with this long brown coat with fur.



LADIES' LONG COAT

CODE: 54-101-071 SIZES: S:2 M:4 L:2 XL:2

COMPOSITION: 100% PES C: L:4 XL:4 XXL:4

COLOR:

■ ■ ■
BLACK LT BEIGE BROWN

This stunning long black coat with fur is all you need for this winter.



LADIES' LONG COAT

CODE : 54-101-071 SIZES : S:2 M:4 L:2 XL:2

COMPOSITION : 100% PES C : L:4 XL:4 XXL:4

COLOR :

BLACK LTBEIGE BROWN
BLACK LTBEIGE BROWN

THE BALLROOM LOOK

If you're looking for a date night outfit, this white fur coat paired with a leather skirt is the perfect choice.



LADIES' SHORT FAUX FUR COAT

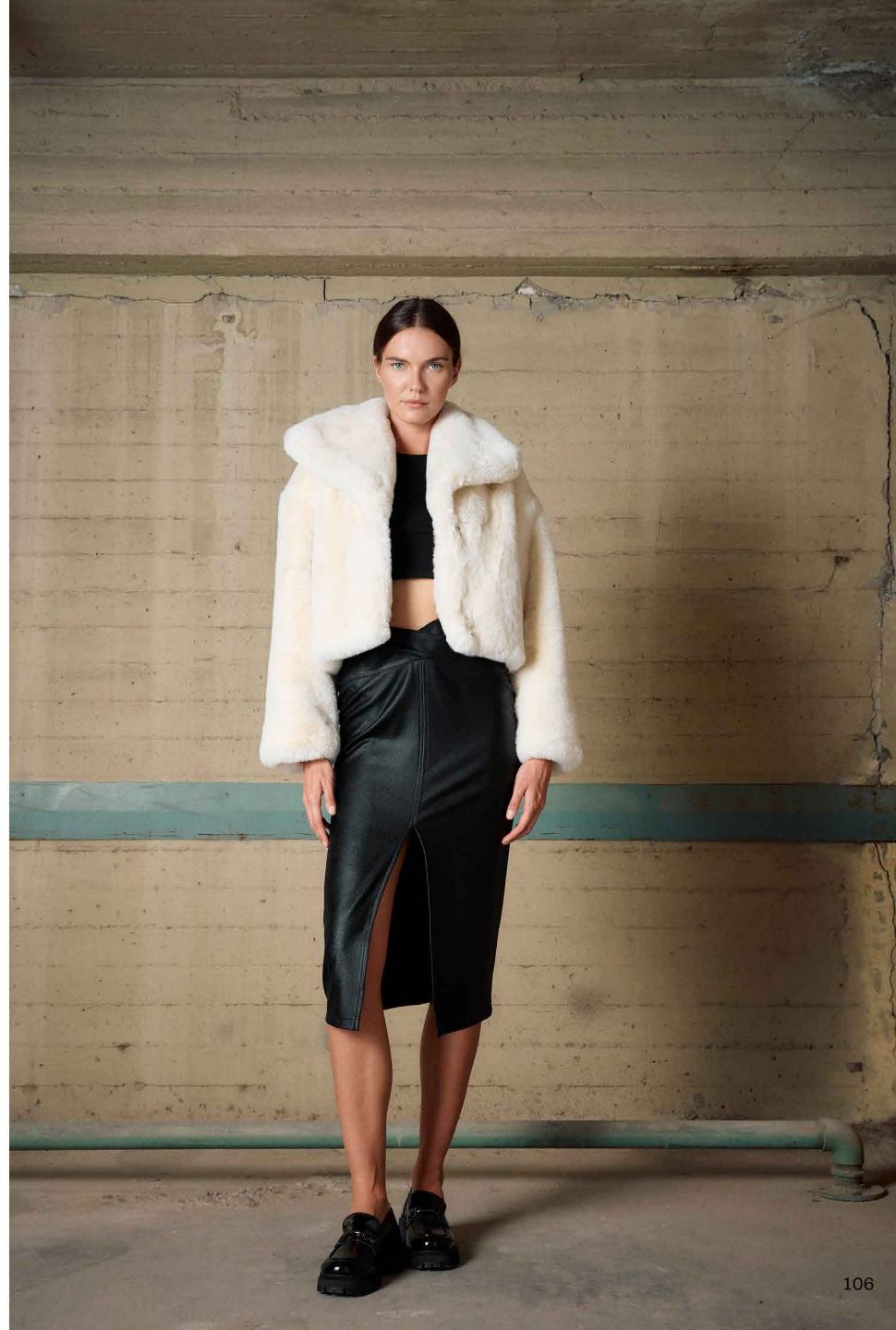
CODE: 54-101-057 SIZES: S:4 M:4 L:2 XL:2

COMPOSITION: 100% PES

COLOR:



BLACK OFF WHITE



THE FESTIVE LOOK

Create the perfect party outfit for all the jolly winter festivities with this black fur coat paired with a black sparkly dress.



LADIES' SHORT FAUX FUR

CODE : 54-101-057 SIZES : S:4 M:4 L:2 XL:2

COMPOSITION : 100% PES

COLOR :



BLACK OFF WHITE

LADIES' SHORT COAT

CODE : 52-101-046 SIZES : S:2 M:4 L:2 XL:2

COMPOSITION : 80% PES 10% CV 10% PC

COLOR :



BLACK LT GREY



Enhance your wardrobe with a cozy beige fur jacket paired with brown trousers and a white shirt.



LADIES' SHORT FAUX FUR JACKET

CODE: 54-101-073 SIZES: S:4 M:4 L:2 XL:2

COMPOSITION: 100% PES

COLOR:



Get that urban look with a long puffer black jacket paired with a black shirt.



LADIES' LONG JACKET

CODE : 54-101-046

COMPOSITION : 100% PES

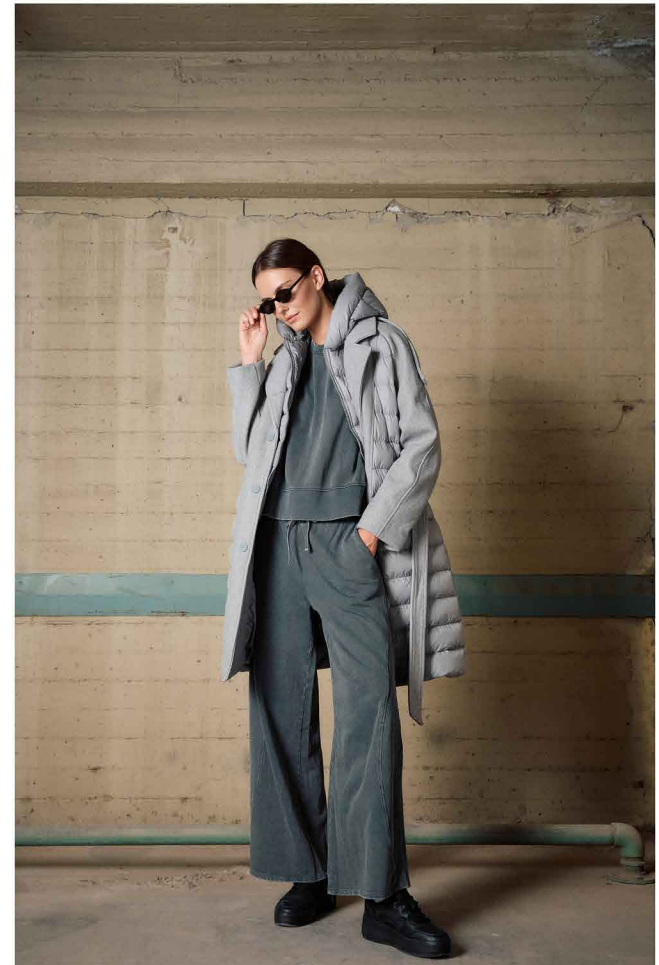
SIZES : S:2 M:4 L:2 XL:2

COLOR :



BLACK GREY LT BEIGE

This grey long jacket is the ideal look for a comfortable winter outfit.



LADIES' LONG JACKET

CODE : 54-101-046 SIZES : S:2 M:4 L:2 XL:2

COMPOSITION : 100% PES

COLOR :



THE TECHNO ERA

This black long puffer jacket with fur in the hood is perfect for an all-day excursion.



LADIES' LONG PUFFER JACKET

CODE : 52-101-087 SIZES : S:2 M:4 L:2 XL:2

COMPOSITION : 100% PES

COLOR :



BLACK KHAKI



THE GIRLIE POP LOOK

Create a moment with your outfit with a beige long hooded coat.



LADIES' LONG HOODED COAT

CODE : 54-101-108

COMPOSITION : 100% PES

SIZES : S:2 M:4 L:2 XL:2

COLOR :



This bordo long hooded coat will create a chic look no matter where you go.



LADIES' LONG HOODED COAT

CODE : 54-101-108 SIZES : S:2 M:4 L:2 XL:2

COMPOSITION : 100% PES

COLOR :

BLACK BORDO BEIGE



Steal the spotlight with this light beige demi hooded jacket.



LADIES' DEMI HOODED

CODE: 54-101-001 SIZES: S:2 M:4 L:2 XL:2

COMPOSITION: 100% PES

COLOR:



BLACK GREEN LT BEIGE

Autumn time calls for a green sleeveless hooded vest paired with a total white look.



LADIES' DEMI HOODED VEST

CODE : 54-102-002 SIZES : S:2 M:4 L:2 XL:2

COMPOSITION : 100% PES

COLOR :



BLACK KHAKI

A demi-hooded fango jacket fits perfectly every winter activity.



LADIES' DEMI HOODED JACKET

CODE : 54-101-106 SIZES : S:2 M:4 L:2 XL:2

COMPOSITION : 100% PES C: L:4 XL:4 XXL:4

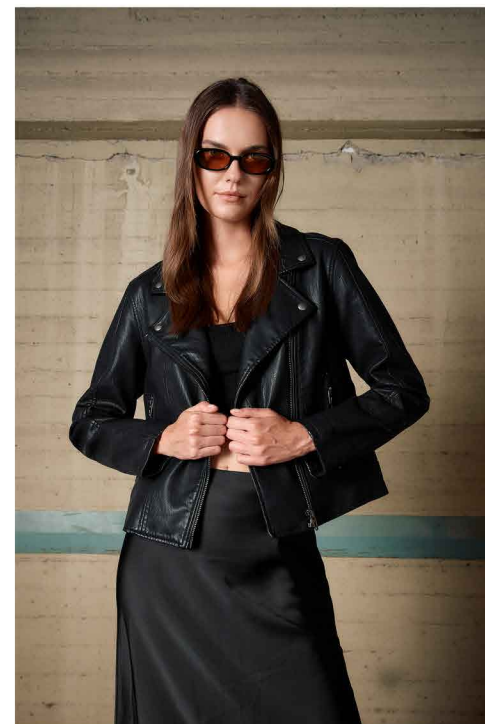
COLOR :



BLACK FANGO BROWN

THE BRAT WINTER LOOK

A leather PU jacket will bring the baddie vibes to all of your looks.



LADIES' PU JACKET

CODE : 54-101-080

COMPOSITION : 100% PU

SIZES : S:2 M:4 L:2 XL:2

C: L:4 XL:4 XXL:4

COLOR :



BLACK

THE DAHLIA LOOK

This stunning, flowery, long coat will make you stand out in every room.



LADIES' LONG COAT

CODE : 54-101-089

SIZES : S:2 M:4 L:2 XL:2

COLOR :



BLACK

COMPOSITION : 100% PES



A black demi coat with a hoodie is a versatile piece you need in your closet.



LADIES' DEMI COAT

CODE: 54-101-088 SIZES: S:2 M:4 L:2 XL:2

COLOR:

COMPOSITION: 85% PES 15% EL C: L:4 XL:4 XXL:4


BLACK

A casual black leather PU jacket with brown details is a perfect winter piece to have.



LADIES' PU JACKET

CODE : 54-101-060 SIZES : S:2 M:4 L:2 XL:2

COMPOSITION : 100% PU

COLOR :



BROWN

THE CITY GIRL LOOK

This beige short jacket is everything you need for an afternoon walk in the city.



LADIES' SHORT JACKET

CODE : 54-101-044 SIZES : S:2 M:4 L:2 XL:2

COMPOSITION : 55% PU 45% PES

COLOR :



A long brown coat will instantly make you look more elegant than ever.



LADIES' LONG COAT

CODE : 54-101-055

COMPOSITION : 100% PES

SIZES : S:2 M:4 L:2 XL:2

COLOR :



BLACK GREY LT BEIGE BROWN