



PRIMEFASHION smart



Winter Collection  
2025-26  
[www.splendidfashion.gr](http://www.splendidfashion.gr)

# splendid

W  
I  
N  
T  
E  
R  
  
C  
O  
L  
L  
E  
C  
T  
I  
O  
N  
  
2  
0  
2  
5  
  
|  
  
2  
6



way of dressing up

## Philosophy

Prime Fashion S.A. was founded in Thessaloniki and includes the trademarks of Splendid, Biston, Smart.

In 1992, when the Splendid brand was launched for the first time - S. - Skodras, D. - Dimitrios, its target was the wholesale market. Over the years, they have managed to develop their own design concept and new ideas came to life based on the market needs.

With an efficient distribution channel across Greece and Europe, with its products at competitive prices and on-time deliveries, it increased sales by 50% in the first four years.

In 2007, it entered a new life and work style by launching its own privately-owned facilities and show rooms, as well as its even larger warehouses equipped with the latest logistics storage facilities, aiming to a most direct and fast service for its customers.

In 2012, Prime Fashion SA entered dynamically in the field of e-commerce by creating a modern online store [www.splendidfashion.gr](http://www.splendidfashion.gr) and then in 2016 the online store was redesigned to match even better the brand's image and to be even more functional and user-friendly for its customers. Investing in modern social media, we aim at breaking down the barrier between traditional retail and e-commerce, approaching more and more clients everywhere in Greece and throughout the world.

Prime Fashion S.A. (splendid, biston, smart) characterised mainly by its wide range in men's and women's jackets, launches a collection each season for men and women who want to feel special every moment.

The new collection brings up each person's personal taste - proving that style can still be our ally in everyday demanding life.

Our new proposals for jackets, vests, synthetic leather, faux furs, sweatshirts, accessories appeal to men and women that love modern lifestyle and feel special. With a wide range of casual, athletic, boutique clothing and accessories, every person can find what best reflects her/his personality in outfits for the office, to go for a walk, go out to a restaurant, do sports.

The company takes special care so that the fabrics and auxiliary materials used are environmentally-friendly, accompanied by quality certificates, free from any substance that could be harmful to the consumer.

The company's top priorities include further strengthening of the domestic retail network, either through equity or by developing new partnerships where appropriate.

Particular emphasis is placed on further developing its sales abroad. The company already seeks to further expand both in markets where it is already active and to also enter new markets that are of great interest for the company's products.

The company's clothes are currently available at more than 200 points of sale all over Greece, Cyprus, the Balkans, as well as at its online store

[www.primefashion.gr](http://www.primefashion.gr).

## HEADQUARTERS:

2nd. P. Simmachikis Odou Oraioastrou-Diavaton,  
P.C. 57013 - P.OB. 1051  
T: 2310 411.715 & 414.102,  
F: 2310 415.347,  
[www.primefashion.gr](http://www.primefashion.gr)  
email: [info@biston.gr](mailto:info@biston.gr)

## N. Greece Representative:

Alexandros Georgiadis, M: 6977 35 40 40

## Athens- Islands Representative:

Andreas Lampropoulos,  
M: 6978 99 11 71, T: 210 57 44 312  
59 Amfiaraou Str, Kolonos, Athens  
P.C 10442



## S. Greece Representative:

Petros Giannis M: 6936 78 77 78

## Crete Island Representative:

Pitarokilis Lefteris  
M: 6979 98 30 33, 6979 98 30 34  
T: 2810 280 715, 2810 281 253  
F: 2810 243 531  
Danilou Sintichaki 14  
and Olof Palme 147  
P.C. 71409

Join us on

 Biston - Splendid  
 Biston\_Splendid





## THE GEMINI LOOK

A reversible jacket can create countless looks easily.



### MEN'S REVERSIBLE JACKET

CODE : 54-201-024    SIZES : M:2 L:4 XL:2 XXL:2

COMPOSITION : 90% CR 10% PES    C : XL:4 XXL:4 XXXL:4

COLOR :



BLACK FANGO



GREEN NAVY



A black and blue reversible jacket will alter your look depending on your needs.



## MEN'S REVERSIBLE JACKET

CODE : 54-201-024

SIZES : M:2 L:4 XL:2 XXL:2

COLOR :

COMPOSITION : 90% CR 10% PES

C : XL:4 XXL:4 XXXL:4



A beige shirt paired with a blue jacket is perfect for an autumn Sunday walk.



## MEN'S T-SHIRT

CODE : 54-206-001

COMPOSITION : 100% CO

SIZES : S:2 M:2 L:4 XL:4 XXL:2

COLOR :



BLACK WHITE BEIGE LT GREY DK GREY PAPRIKA



## MEN'S JACKET

CODE : 54-201-070

COMPOSITION : 100% PES

SIZES : M:2 L:4 XL:2 XXL:2

C : XL:4 XXL:4 XXXL:4

COLOR :



BLACK NAVY



## THE AGENT LOOK

A demi puffer jacket will be your go-to piece for every day during winter.



### MEN'S DEMI JACKET

CODE: 50-201-052 SIZES: M:2 L:4 XL:2 XXL:2

COMPOSITION: 100% PES

COLOR:



BLACK DK GREY OLIVE

Stand out from boring winter looks with a brown long puffer jacket.



### MEN'S LONG JACKET

CODE: 52-201-116 SIZES: M:2 L:4 XL:2  
XXL:2

COMPOSITION: 100% PES

COLOR:



BLACK CAMEL

## THE SLEEK LOOK

Enhance your outfit with a beige-grey jacket paired with a brown shirt.



### MEN'S JACKET

CODE: 54-201-095 SIZES: M:2 L:4 XL:2 XXL:2

COMPOSITION: 100% CR

COLOR:



Create a chic look with a brown jacket.



Be bold with a black jacket paired with cargo jeans.



## MEN'S JACKET

CODE: 54-201-079 SIZES: M:2 L:4 XL:2 XXL:2

COMPOSITION : 100% CO

COLOR :



Elevate your casual outfit with a black leather puffer jacket and cargo jeans.



## MEN'S JACKET

CODE : 54-201-058

COMPOSITION : 100% PU

SIZES : M:2 L:4 XL:2 XXL:2

COLOR :



BLACK



## THE HIKER LOOK

If you love nature this grey jacket is perfect to keep you warm.



## MEN'S JACKET

CODE : 52-201-095 SIZES : M:2 L:4 XL:2 XXL:2

COMPOSITION : 100% PES

COLOR :



This blue jacket is perfect even for the most rainy days.



## MEN'S JACKET

CODE: 54-201-077 SIZES: M:2 L:4 XL:2 XXL:2

COMPOSITION: 100% PES C: XL:4 XXL:4 XXXL:4

COLOR:





## MEN'S JACKET

CODE : 54-201-077

COMPOSITION : 100% PES

SIZES : M:2 L:4 XL:2 XXL:2

C : XL:4 XXL:4 XXXL:4

COLOR :



BLACK DK GREY

A black jacket with a hood will create the most comfortable feel.





## THE SEEKER LOOK

If you love the color green this jacket is for you.



## MEN'S JACKET

CODE : 54-201-087    SIZES : M:2 L:4 XL:2 XXL:2

COMPOSITION : 100% CR

COLOR :



BLACK



KHAKI

## THE MIDNIGHT OWL LOOK

Rock a total black outfit with a reversible black jacket paired with black trousers.



### MEN'S REVERSIBLE JACKET

CODE : 54-201-078    SIZES : M:2 L:4 XL:2 XXL:2

COMPOSITION : 60% CR 40% PA

COLOR :



BLACK    KHAKI

## THE DETECTIVE LOOK

Create a great look with a black puffer jacket paired with black trousers.





The color blue will be one of the trendiest color this season. So don't miss out on this perfect blue demi jacket.



## MEN'S DEMI JACKET

CODE : 54-201-057    SIZES : M:2 L:4 XL:4 XXL:2

COMPOSITION : 55% CR 45% PES

COLOR :





Chilly days call for a green jacket and a black knit shirt.



## MEN'S JACKET

CODE : 54-201-057

COMPOSITION : 55% CR 45% PES

SIZES : M:2 L:4 XL:4 XXL:2

COLOR :



BLACK INDIGO DK GREEN

## MEN'S KNITWEAR

CODE : 54-206-012

COMPOSITION : 82% CO 18% PA

SIZES : M:2 L:4 XL:4 XXL:2 XXXL:2

COLOR :



BLACK NAVY DK GREY



## THE ARCTIC NOMAD LOOK

A long blue puffer jacket will keep you warm even in the coldest places.



### MEN'S LONG JACKET

CODE: 50-201-042    SIZES: M:2 L:4 XL:2 XXL:2

COMPOSITION: 100% PES

COLOR:





## THE BOOMER LOOK

Summon your old self with this grey coat paired with a bordo shirt.



### MEN'S COAT

CODE : 54-201-106

COMPOSITION : 80% PES 20% WO

SIZES : M:2 L:4 XL:2 XXL:2

COLOR :



BLACK DK GREY

### MEN'S SWEATSHIRT

CODE : 54-206-002

COMPOSITION : 95% CO 5% EL

SIZES : M:2 L:4 XL:4 XXL:2

COLOR :



BLACK BORDO NAVY

A black coat will create a dashing look for every occasion.



## MEN'S COAT

CODE : 54-201-106

COMPOSITION : 80% PES 20% WO

SIZES : M:2 L:4 XL:2 XXL:2

COLOR :

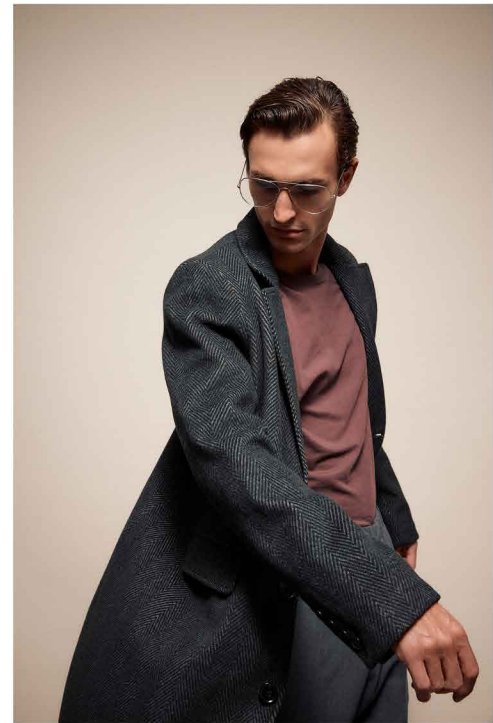


BLACK DK GREY

Look like a true gentleman with a grey coat paired with grey trousers and a bordo



## THE POLISHED LOOK



### MEN'S COAT

CODE : 52-201-060

COMPOSITION : 100% PES

SIZES : M:2 L:4 XL:2 XXL:2

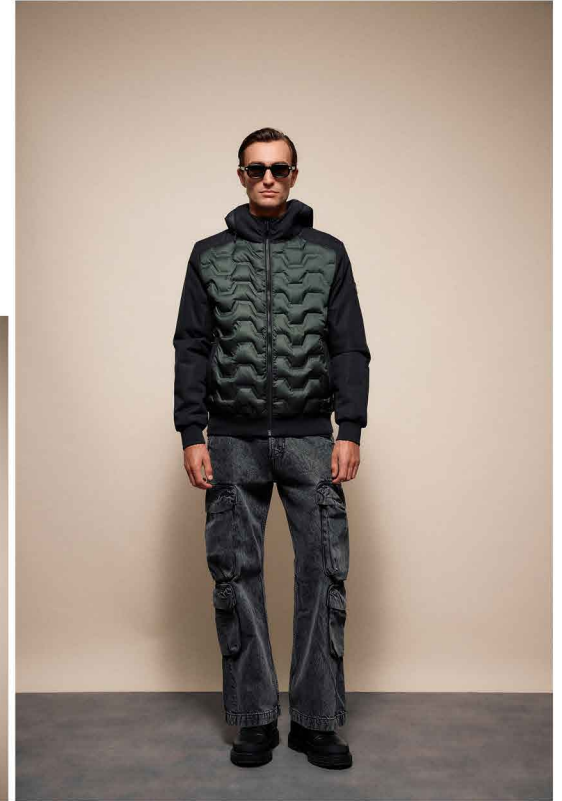
COLOR :



BLACK GREY

## THE SUPERNOVA LOOK

Create a bold statement with this jacket with green puffer details and black cargo pants.



### MEN'S JACKET

CODE : 54-201-026    SIZES : M:2 L:4 XL:2 XXL:2

COMPOSITION : 90% CR 10% PES

COLOR :





Create a polished look with a grey mid length coat.



## MEN'S COAT

CODE : 52-201-058    SIZES : M:2 L:4 XL:2 XXL:2

COMPOSITION : 70% PES 30% WO

COLOR :



Treat yourself this winter with a wine red knit shirt and a black puffer jacket.



## MEN'S KNITWEAR

CODE : 54-206-014

COMPOSITION : 82% CO 18% PA

SIZES : M:2 L:4 XL:2 XXL:2 XXXL:2

COLOR :



BLACK WHITE DK GREY DK GREEN WINE RED



## MEN'S HOODED JACKET

CODE : 54-201-009

COMPOSITION : 100% PES

SIZES : M:2 L:4 XL:2 XXL:2

COLOR :



BLACK BEIGE



## THE DINNER DATE LOOK

Look as handsome as ever with this grey hooded coat and a total white outfit.



### MEN'S HOODED COAT

CODE : 54-201-061

COMPOSITION : 80% PES 10% CV 10% PAN

SIZES : M:2 L:4 XL:2 XXL:2

C : XL:4 XXL:4 XXXL:4

COLOR :



BLACK LT GREY



A white sweater with a turtleneck is the most versatile piece in your wardrobe.



## MEN'S SWEATER

CODE : 54-206-013

COMPOSITION : 82% CO 18% PA

SIZES : M:2 L:4 XL:4 XXL:2 XXXL:2

COLOR :



BLACK WHITE GREY

Create an elegant outfit for running errands with a black polo shirt and a beige puffer.



## MEN'S POLO SHIRT

CODE : 54-206-009

COMPOSITION : 82% CO 18% PA

SIZES : M:2 L:4 XL:4 XXL:2 XXXL:2

COLOR :



BLACK NAVY DK GREEN



## MEN'S LONG JACKET

CODE : 54-201-013

COMPOSITION : 100% PES

SIZES : M:2 L:4 XL:4 XXL:2

COLOR :



BLACK KHAKI DK BEIGE



## THE ADVENTURER LOOK

If you love winter adventures a green sweater and a khaki puffer jacket are a must.



### MEN'S SWEATER NECK

CODE : 54-206-015

COMPOSITION : 82% CO 18% PA

SIZES : M:2 L:4 XL:4 XXL:2 XXXL:2

COLOR :



BLACK GREY DK GREEN BEIGE NAVY PETROL WINE RED



### MEN'S LONG JACKET

CODE : 54-201-013

COMPOSITION : 100% PES

SIZES : M:2 L:4 XL:4 XXL:2

COLOR :



BLACK KHAKI DK BEIGE





Feel comfortable and cozy with this khaki long jacket.



## MEN'S LONG JACKET

CODE : 54-201-081    SIZES : M:2 L:4 XL:4 XXL:2

COMPOSITION : 80% CR 20% PES

COLOR :



BLACK   NAVY   KHAKE



If you love navy blue this long jacket will be your favorite winter piece.



## MEN'S LONG JACKET

CODE : 54-201-081

COMPOSITION : 80% CR 20% PES

SIZES : M:2 L:4 XL:4 XXL:2

COLOR :



BLACK KHAKI NAVY

## MEN'S T-SHIRT

CODE : 54-206-001

COMPOSITION : 100% CO

SIZES : S:2 M:2 L:4 XL:4 XXL:2

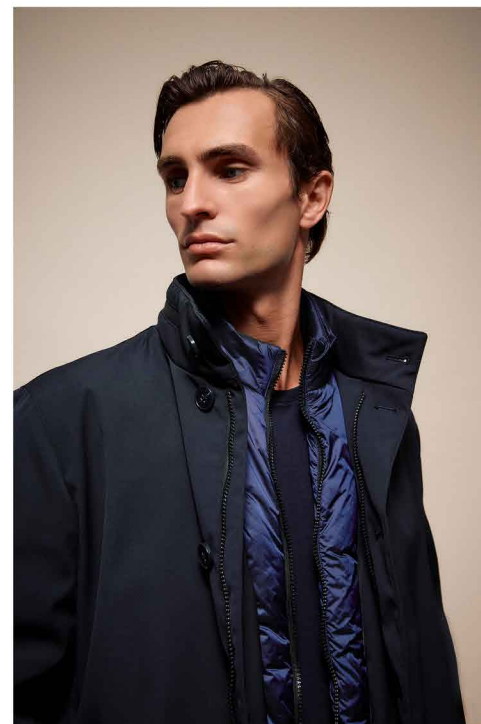
COLOR :



BLACK WHITE DK GREY LT GREY BEIGE PAPRIKA

## THE ROYAL BLUE LOOK

Explore the deepest blue look of this season with this navy blue jacket with colar.



### MEN'S JACKET WITH COLAR

CODE : 54-201-096

COMPOSITION : 100% PES

SIZES : M:2 L:4 XL:2 XXL:2

C: XL:4 XXL:4 XXXL:4

COLOR :



BLACK NAVY

Create the most charming look with a brown jacket paired with a paprika color



## MEN'S T-SHIRT

CODE : 54-206-001

COMPOSITION : 100% CO

SIZES : S:2 M:2 L:4 XL:2 XXL:2

COLOR :



BLACK WHITE DK GREY LT GREY BEIGE PAPRIKA



## MEN'S JACKET

CODE : 54-201-072

COMPOSITION : 100% CR

SIZES : M:2 L:4 XL:2 XXL:2

COLOR :



BLACK DK GREEN





## THE ARCTIC LOOK

Impress everyone with this minty puffer jacket.



## MEN'S HOODED JACKET

CODE : 54-201-018    SIZES : M:2 L:4 XL:2 XXL:2

COMPOSITION : 100% PES

COLOR :



Upgrade your basic shirts with this navy blue shirt.



## MEN'S T-SHIRT

CODE : 54-206-002 SIZES : M:2 L:4 XL:4 XXL:2

COMPOSITION : 95% CO 5% EL

COLOR :



BLACK NAVY BORDO

## MEN'S SWEATER

CODE : 52-206-004 SIZES : M:2 L:4 XL:4 XXL:2

COMPOSITION : 50% VIS 28% PES 22% PA

COLOR :



BLACK BEIGE NAVY DK GREY



## MEN'S CHINO PANTS

CODE : 54-241-002 SIZES : 28:2 30:4 32:4 34:2 36:2 38:2

COMPOSITION : 98% CO 2% EL

COLOR :



DK GREY DK GREEN

## THE PROFESSIONAL LOOK

Create the perfect office look with these black pants paired with a full zip grey jacket.



### MEN'S MOUTON

CODE : 54-201-105    SIZES : M:2 L:4 XL:2 XXL:2

COLOR :

COMPOSITION : 100% PES



BLACK



### MEN'S CHINO PANTS

CODE : 54-241-004

COMPOSITION : 63% PES 34% VIS 3% EL

SIZES : 28:2 30:4 32:4 34:2 36:2 38:2

COLOR :



BLACK

### MEN'S FULL-ZIP JACKET

CODE : 54-206-010

COMPOSITION : 82% CO 18% PA

SIZES : M:2 L:4 XL:4 XXL:2 XXXL:2

COLOR :



BLACK DK GREY NAVY

## MENS' KNITTED ROUND NECK

CODE : 52-206-003      SIZES : M:2 L:4 XL:4 XXL:2

COMPOSITION : 50% VIS 28% PES 22% PA

COLOR :



Be cozy in style with this grey puffer jacket and grey trousers.



## MEN'S 2 JACKETS IN ONE

CODE : 54-201-016      SIZES : M:2 L:4 XL:4 XXL:2

COMPOSITION : 60% CR 40% PES

COLOR :



## MEN'S TROUSERS PANTS

CODE : 48-241-008      SIZES : 28:2 30:4 32:4 34:2 36:2 38:2

COMPOSITION : 63% PES 34% VI 3% SPA

COLOR :





## THE MAVERICK LOOK

Feel like a baddie with a black leather jacket paired with black jean cargo pants.



### MEN'S PU LEATHER JACKET

CODE : 54-201-005      SIZES : M:2 L:4 XL:2 XXL:2

COMPOSITION : 55% PU 45% PES      C : XL:4 XXL:4 XXXL:4

COLOR :



BLACK



## THE TWINNING LOOK

### MEN'S LONG JACKET

CODE : 54-201-081

COMPOSITION : 80% CR 20% PES

SIZES : M:2 L:4 XL:4 XXL:2

COLOR :



BLACK KHAKI NAVY

### LADIES' LONG COAT

CODE : 54-101-035

COMPOSITION : 100% PES

SIZES : S:2 M:4 L:2 XL:2

COLOR :



BLACK KHAKI LT BEIGE



A white reversible jacket is everything a girl could want.



## LADIES' REVERSIBLE JACKET

CODE: 52-101-106 SIZES: S:2 M:4 L:2 XL:2

COMPOSITION: 100% PES

COLOR:



BLACK OFF WHITE PETROL



## THE RETRO GIRLIE LOOK

If you love colors ever during winter this petrol double-face vest paired with a brown knitted shirt is the outfit you need.



### LADIES' DOUBLE-FACE VEST

CODE : 52-102-002    SIZES : S:2 M:4 L:2 XL:2

COMPOSITION : 100% PES

COLOR :



BLACK OFF WHITE PETROL

Look stunning in your meetings with this off white long coat.



Create a chic look with a black skirt paired with a black long coat.



## LADIES' LONG COAT

CODE: 54-101-059    SIZES: S:2 M:4 L:2 XL:2

COLOR :

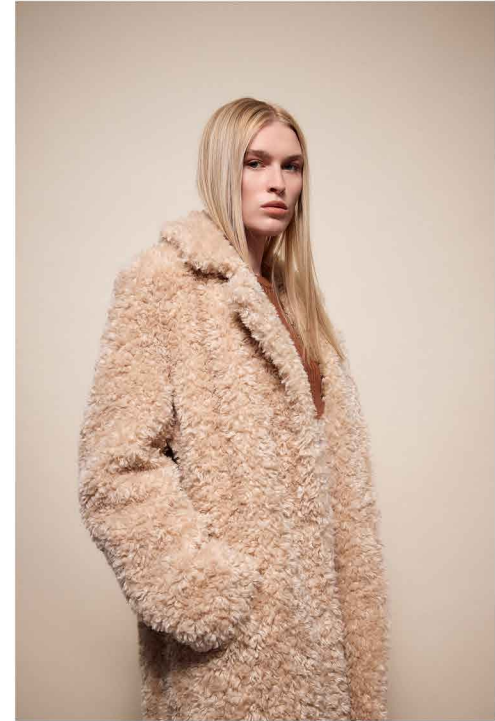


BLACK    OFF WHITE

COMPOSITION : 100% PES



A beige boa fur coat is a must for your night-outs.



## LADIES' LONG BOA FUR COAT

CODE : 54-101-100

COMPOSITION : 100% PES

SIZES : S:2 M:4 L:2 XL:2

COLOR :



BLACK BEIGE CAMEL

A puffer vest is the perfect choice for the first autumn chilly nights.



## LADIES' PUFFER VEST

CODE : 50-102-006

COMPOSITION : 100% PES

SIZES : S:2 M:4 L:2 XL:2

COLOR :



BLACK LT BEIGE

## THE WINTER PRINCESS LOOK

Feel warm no matter the cold with this beige hooded jacket.



### LADIES' LONG COAT

CODE : 54-101-096    SIZES : S:2 M:4 L:2 XL:2

COMPOSITION : 100% PES

COLOR :



BLACK OFF WHITE BROWN



### LADIES' HOODED JACKET

CODE : 48-101-069    SIZES : S:2 M:4 L:2 XL:2

COMPOSITION : 95% PES 5% EL

COLOR :



BLACK BEIGE

## THE DIVA LOOK

This brown coat will be your go-to piece during winter times.



## LADIES' SHORT JACKET

CODE : 54-101-096

COMPOSITION : 100% PES

SIZES : S:2 M:4 L:2 XL:2

COLOR :



BLACK OFF WHITE BROWN

A leather coat with fur will create the most enchanting night look.



## LADIES' SHORT COAT

CODE : 54-101-070    SIZES : S:2 M:4 L:2 XL:2

COMPOSITION : 100% PES    C : L:4 XL:4 XXL:4

COLOR :



BLACK LT BEIGE BROWN

Feel like a disco queen with this white coat paired with a black skirt.



This retro chic look with a brown coat paired with a white shirt and brown long trousers is a statement outfit.



## LADIES' SHORT COAT

CODE : 54-101-070 SIZES : S:2 M:4 L:2 XL:2

COMPOSITION : 100% PES C : L:4 XL:4 XXL:4

COLOR :



BLACK LT BEIGE BROWN

Embrace your elegant era with a brown short coat paired with black trousers and a white shirt.



## LADIES' SHORT COAT

CODE : 54-101-063 SIZES : S:2 M:4 L:2 XL:2

COMPOSITION : 100% PES

COLOR :



BLACK BROWN

Impress everyone with this short grey faux coat.



Look divine with this white faux coat paired with a silky skirt.



## LADIES' SHORT FAUX COAT

CODE : 54-101-051    SIZES : S:2 M:4 L:2 XL:2

COMPOSITION : 100% PES

COLOR :



BLACK OFF WHITE GREY

Bring up your most elegant self with a black leather jacket and a black silky skirt.



## LADIES' PU LEATHER JACKET

CODE: 54-101-084 SIZES: S:2 M:4 L:2 XL:2

COMPOSITION: 100% PU C: L:4 XL:4 XXL:4

COLOR:



BLACK

A black leather jacket is a must for your winter adventures.



## LADIES' PU LEATHER

CODE: 52-101-107 SIZES: S:2 M:4 L:2

COMPOSITION: 100% PU C: L:4 XL:4 XXL:4

COLOR:



BLACK



## THE GO-TO LOOK

Elevate your everyday look with a black sleeveless puffer vest.



### LADIES' SLEEVELESS VEST

CODE: 52-102-005    SIZES: S:4 M:4 L:2

COMPOSITION: 100%PES

COLOR:



BLACK    LT BEIGE



## THE BADDIE ERA LOOK

Embrace your fierce self with a black jean jacket with fur.



## LADIES' JEAN JACKET

CODE : 54-101-042    SIZES : S:2 M:4 L:2 XL:2

COMPOSITION : 52.6% CO 32.5% PES 12% CV 2.9% PAN

COLOR :



BLACK   DK WASH

Look fabulous while doing your everyday activities with a chocolate color puffer jacket.



## LADIES' PUFFER

CODE : 48-102-004    SIZES : S:2 M:4 L:2 XL:2

COMPOSITION : 100% PES

COLOR :



## THE SPY GIRL LOOK

A black long coat will make you look put together easily.



### LADIES' LONG COAT

CODE : 54-101-035    SIZES : S:2 M:4 L:2 XL:2

COMPOSITION : 100% PES

COLOR :



A khaki long coat will bring a splash of color to your everyday looks.



## LADIES' LONG COAT

CODE : 54-101-035 SIZES : S:2 M:4 L:2 XL:2

COMPOSITION : 100% PES

COLOR :



This mint long coat will make you look trendy all winter long.



## LADIES' LONG COAT

CODE : 54-101-105 SIZES : S:2 M:4 L:2 XL:2

COMPOSITION : 100% PES 100% PA

COLOR :





A short black jacket will keep you warm and cute during winter.



## LADIES' SHORT JACKET

CODE : 50-101-023    SIZES : S:2 M:4 L:2 XL:2

COMPOSITION : 100% PES

COLOR :



BLACK



WHITE

## THE LADYLIKE LOOK

Enhance your feminine aura with this long beige hooded coat.



### LADIES' HOODED COAT

CODE : 52-101-008

COMPOSITION : 100% PES

SIZES : S:2 M:4 L:2 XL:2

COLOR :



## THE OUTDOOR GIRLIE LOOK

If you love activities even during winter season this grey jacket is for you.



### LADIES' SHORT JACKET

CODE : 54-101-097    SIZES : S:2 M:4 L:2 XL:2

COMPOSITION : 93% PA 7% EL

COLOR :



BLACK    FANGO    DK GREY





Every winter wardrobe needs a classic black short jacket to be complete.



## LADIES' SHORT JACKET

CODE: 54-101-097    SIZES: S:2 M:4 L:2 XL:2

COMPOSITION: 93% PA 7% EL

COLOR:



BLACK FANGO DK GREY

Bring texture to your looks with a fango color long jacket.



## LADIES' LONG JACKET

CODE : 54-101-109 SIZES : S:2 M:4 L:2 XL:2

COMPOSITION : 55% CR 45% PES

COLOR :



BLACK FANGO DK GREY

Look effortlessly cool with a beige puffer jacket.



## LADIES' PUFFER JACKET

CODE : 54-101-021 SIZES : S:2 M:4 L:2 XL:2

COMPOSITION : 100% PA

COLOR :



BLACK OLIVE

## THE PARTY ERA LOOK

Stay warm even in your most stunning night outfits with a black puffer jacket.



### LADIES' PUFFER JACKET

CODE: 54-101-021    SIZES: S:2 M:4 L:2 XL:2

COMPOSITION: 100% PA

COLOR:

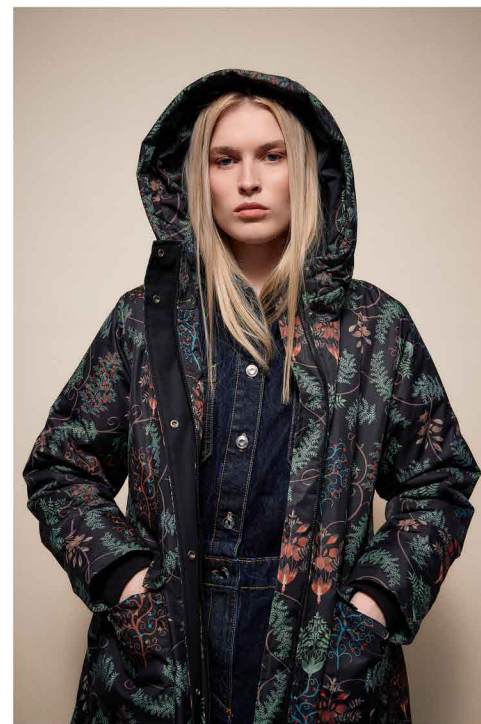


BLACK    OLIVE



## THE FREE SPIRIT LOOK

If you love flowers and colors even if it's winter this long jacket is the perfect choice for you.



### LADIES' LONG JACKET

CODE : 54-101-076

COMPOSITION : 100%PES

SIZES : S:2 M:4 L:2 XL:2

COLOR :



BLACK



## LADIES' LONG COAT

CODE : 48-101-062

COMPOSITION : 100% PES

SIZES : S:4 M:4 L:2 XL:2

COLOR :



Create an enchanting look with a pink long coat.





## THE JOGGER LOOK

This black puffer jacket will create a cute look for when you do your activities.



## LADIES' PUFFER JACKET

CODE: 54-101-005    SIZES: S:2 M:4 L:2 XL:2

COMPOSITION: 100% PES

COLOR:



BLACK    GREEN    LT BEIGE



A light beige puffer jacket will create the most charming outfit.



## LADIES' PUFFER JACKET

CODE : 54-101-005    SIZES : S:2 M:4 L:2 XL:2

COMPOSITION : 100% PES

COLOR :



## THE PARISIAN LOOK

Bring up the Parisian vibe to your look with a black long coat.



### LADIES' LONG COAT

CODE : 50-101-078

COMPOSITION : 100% PES

SIZES : S:2 M:4 L:2 XL:2

COLOR :



BLACK LT BEIGE

Secure a cozy look with a grey long coat.



Be a fashionista with a dark beige long coat.



## LADIES' LONG COAT

CODE : 54-101-054    SIZES : S:4 M:4 L:2 XL:2

COMPOSITION : 100% PES

COLOR :



BLACK   DK BEIGE   GREY



## THE SCROLL STOPPING LOOK

Stan everyone with this black puffer jacket.



### LADIES' PUFFER JACKET

CODE: 50-101-097    SIZES: S:4 M:4 L:2 XL:2

COMPOSITION: 100% PA

COLOR :



BLACK    ICE



Get two gorgeous looks in one with this beige double-face coat.



## LADIES' DOUBLE-FACE COAT

CODE : 54-101-087    SIZES : S:2 M:4 L:2 XL:2

COMPOSITION : 100% CR    C : L:4 XL:4 XXL:4

COLOR :



BLACK BEIGE

One puffer coat is never enough.



## LADIES' LONG COAT

CODE : 52-101-080    SIZES : S:2 M:4 L:2 XL:2

COMPOSITION : 100% PES

COLOR :



BLACK    BEIGE

That is why you need these stunning black long coats.



## LADIES' LONG COAT

CODE : 52-101-056    SIZES : S:2 M:4 L:4

COMPOSITION : 100% PES    C : XL:4 XXL:4 XXXL:4

COLOR :



BLACK    DK BEIGE

## THE SNOW QUEEN LOOK

This off white long coat will give a glamorous winter vibe for your looks.



### LADIES' LONG COAT

CODE : 54-101-050

COMPOSITION : 100% PES

SIZES : S:2 M:4 L:2 XL:2

COLOR :



OFF WHITE BROWN

## THE LAVISH LOOK

Feel rich with this brown long coat.



### LADIES' LONG COAT

CODE: 54-101-050 SIZES: S:2 M:4 L:2 XL:2

COMPOSITION: 100% PES

COLOR:





A textured black coat will shake the norms of your day to day outfits.



## LADIES' COAT

CODE : 52-101-013    SIZES : S:2 M:4 L:2 XL:2

COMPOSITION : 100% PES

COLOR :

☒ BLACK 
 ☐ OFF WHITE 
 ☐ GREEN

BLACK OFF WHITE GREEN

Create a bold statement with a long black fur coat.



## LADIES' COAT

CODE: 54-101-110 SIZES: S:2 M:4 L:2 XL:2

COMPOSITION: 100%PES

COLOR:



BLACK OFF WHITE

Look like you came from the winter Alps with this white fur coat.



Bordo will be your favorite color with this long puffer coat.



Look as charming as ever with a light beige long coat.



## LADIES' LONG COAT

CODE : 54-101-099    SIZES : S:2 M:4 L:2 XL:2

COMPOSITION : 100% PES    C : L:4 XL:4 XXL:4

COLOR :



BLACK   BEIGE   BORDO



## THE BOSS LOOK

A short coat is a must for your office outfits.



## LADIES' SHORT COAT

CODE: 54-101-053    SIZES: S:2 M:4 L:2 XL:2

COMPOSITION: 30% WO 70% PES

COLOR:



BLACK



LT GREY

A light grey short coat creates the professional tone you need for your meeting looks.



## LADIES' SHORT COAT

CODE : 54-101-053

COMPOSITION : 30% WO 70% PES

SIZES : S:2 M:4 L:2 XL:2

COLOR :



BLACK LT GREY



Stay cozy and pretty with this light green long coat.



## LADIES' LONG COAT

CODE : 54-101-074    SIZES : S:2 M:4 L:2 XL:2

COMPOSITION : 60% CR 40% PA

COLOR :



BLACK KHAKI

## THE PRETTY BASIC LOOK

This black long coat will be the most stunning basic piece in your closet.



### LADIES' LONG COAT

CODE: 54-101-074    SIZES: S:2 M:4 L:2 XL:2

COMPOSITION: 60% CR 40% PA

COLOR:



BLACK    KHAKI



Enhance your errands look with this black long puffer coat.



## LADIES' PUFFER COAT

CODE: 54-101-002

COMPOSITION: 100%PES

SIZES: S:2 M:4 L:2 XL:2

C: L:4 XL:4 XXL:4

COLOR :



BLACK INDIGO BROWN

A brown puffer coat is always a good option for a charming look.



## LADIES' LONG PUFFER COAT

CODE : 54-101-002

COMPOSITION : 100%PES

SIZES : S:2 M:4 L:2 XL:2

C: L:4 XL:4 XXL:4

COLOR :



BLACK INDIGO BROWN

## THE ROCKSTAR LOOK

This black demi jacket is the easiest way to style your day to day look.



### LADIES' PU JACKET

CODE : 54-101-061    SIZES : S:2 M:4 L:2 XL:2

COMPOSITION : 100%PES

COLOR :



BLACK

### LADIES' DEMI JACKET

CODE : 54-101-086    SIZES : S:2 M:4 L:2 XL:2

COMPOSITION : 100%CR

COLOR :



BLACK

## THE MODERN NOMAD LOOK

This sleeveless hooded vest will elevate your winter looks.



### LADIES' HOODED VEST

CODE : 50-102-002    SIZES : S:2 M:4 L:2 XL:2

COMPOSITION : 100% PES

COLOR :

